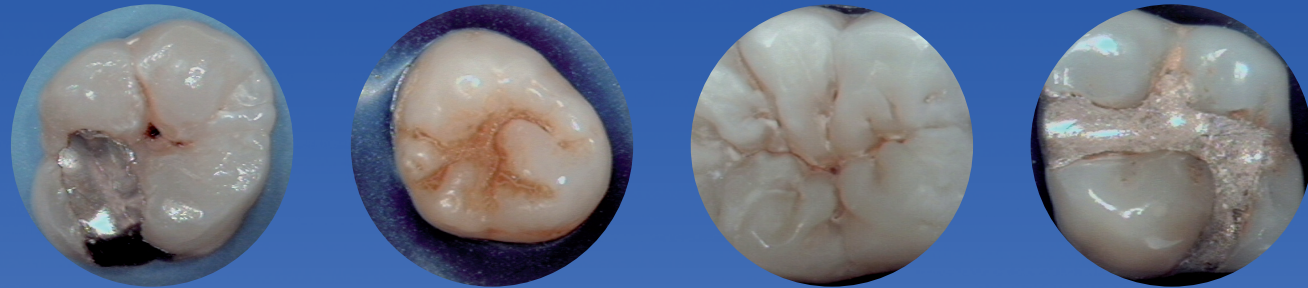
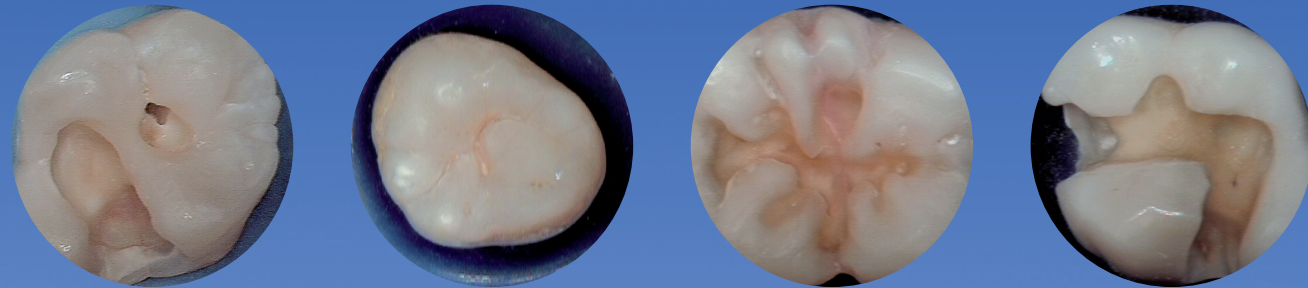


JUST CURE  
— NO PAIN —

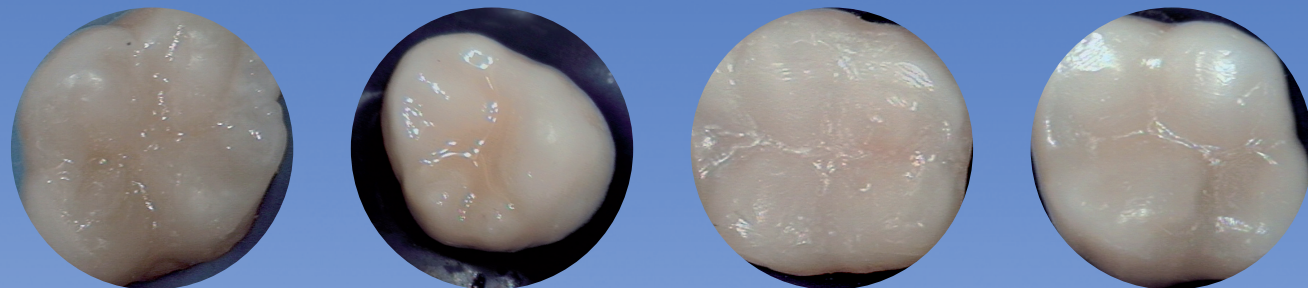
BEFORE



TREATED WITH  
SANDMAN™ FUTURA



AFTER



Photos: Prof., D.D.S., Ph.D. Paul Lambrechts, Catholic University, Leuven, Belgium.



Tranbjergvej 37, 8361 Hasselager DK  
**+45 26 48 40 08**

[info@sandman-dental.com](mailto:info@sandman-dental.com)

[www.sandman-dental.com](http://www.sandman-dental.com)

JUST CURE  
— NO PAIN —

A revolution in minimal invasive treatment

## USING LOW PRESSURE AIR ABRASION



No Drill, No Noise,  
No Vibrations.



Avoiding Anesthetics  
in most cases.



Fewer after  
pains.



Great for Children  
and people afraid of  
needles.



Less invasive  
and traumatic.



SANDMAN™ FUTURA



**SANDMAN™ FUTURA**  
can be assembled on  
a clinic unit, as table  
mount, or as a stand  
alone floor unit!

## THE REVENUE MAKER OF AIR ABRASION WITH RESULTS USING 1.5-3 BAR.

The Sandman™ Futura technology ensures a unique stabile, precise and controlled air abrasion treatment, therefore early diagnostic and intervention with more tooth structure saved compared to traditional method is ideal.

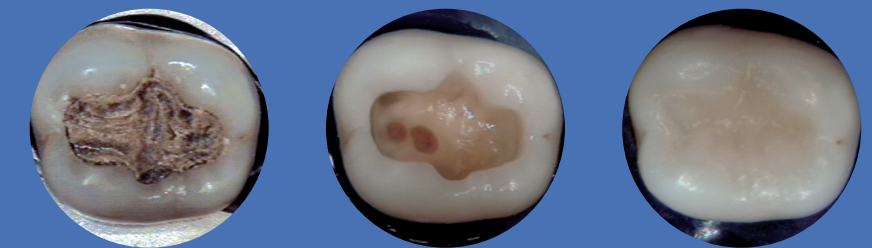
A thin, ultra-precise jet of compressed air bearing microparticles of aluminum oxide treats the tooth substance effectively and easily. Sandman Futura is based on the unique patented whirl atomisation principle, which ensures exact and controlled treatment at low pressure with the exact amount of powder.



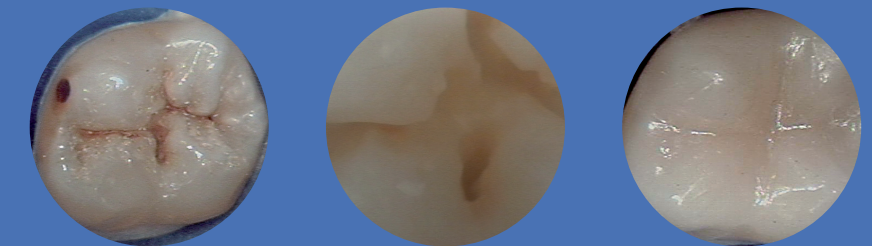
## TREATMENTS

- |                              |                                   |                                |
|------------------------------|-----------------------------------|--------------------------------|
| ✓ Removal of old composite   | ✓ Removal of old amalgam fillings | ✓ Crown and bridge preparation |
| ✓ Profound approximal caries | ✓ Occlusal caries                 | ✓ Incisal fillings             |
| ✓ Fissure and pits           | ✓ Cervical caries                 | ✓ Usur                         |

### AMALGAM REMOVAL USING DRILL AND **SANDMAN™ FUTURA**



### DEEP FISSURE AND CARIES TREATMENT USING **SANDMAN™ FUTURA**



### HANDPIECES

Handpiece tips are removable and can be sterilized.  
1 piece 0.5 mm jet °70 angle.  
1 piece 0,6 mm jet °70 angle.

Other angles available

### SOUND LEVEL

< 15 db.

### POWDER

Specially calibrated Aluminium Oxide – AL<sub>2</sub>O<sub>3</sub>.  
29 µm. disposable 40 gram cups.  
45 µm. disposable 40 gram cups.

### WEIGHT

2.5 Kg.



## ADVANTAGES FOR THE CLINIC

- Shorten dental chair treatment up to 20%.
- Using Sandman typically increases clinic turnover 15-20%.
- Sandman guarantee the patients higher quality and more satisfaction which attracts more patients and gives an option for more rational use of clinic and time..
- Is extremely accurate, less invasive and traumatic.
- Good investment with a payback time from 3 months!